

Catalog of 2-1-1 Materials

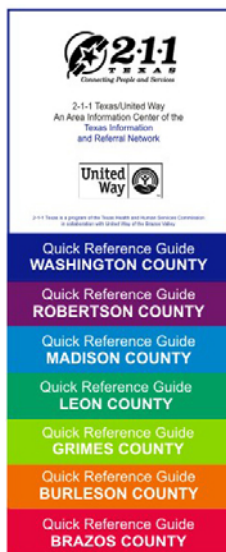
Quick Reference Guides

8 1/2" x 3 5/8"

Most commonly requested agencies in the Brazos Valley. Available for each of the seven counties:

Brazos • Burleson • Grimes • Leon
Madison • Robertson • Washington

*Free for use as a quick, convenient source for professionals.

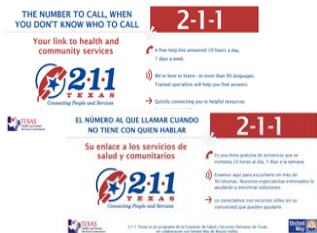


2-1-1 Business Cards

2" x 3 1/2"

Bilingual two-sided business-sized cards, to reinforce the 2-1-1 message.

*Free for use with clients and general public, as a reminder to call 2-1-1.

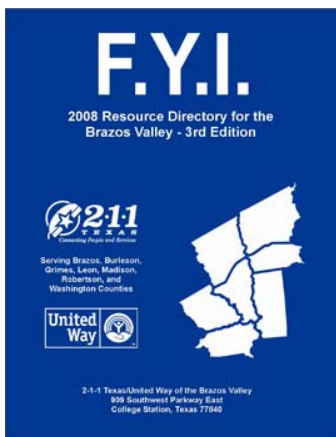


The F.Y.I. Directory

11" x 9"

A spiral-bound, valuable resource that is generated from the comprehensive database, used by 2-1-1 Texas, for Information & Referral.

*May be purchased for \$10. For professional use.



2-1-1 Quick Cards

5 1/2" x 8 1/2"

Illustrative & bilingual two-sided index cards, communicating the 2-1-1 message.

*Free for public and professional use in client packets, office displays or event giveaways.

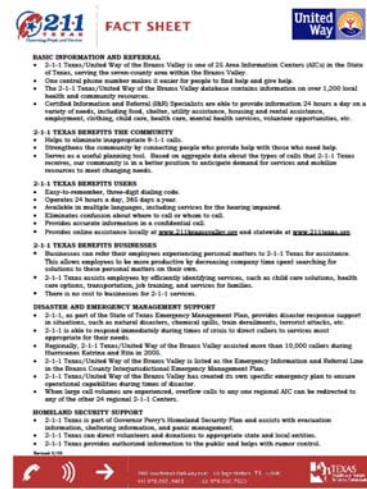


2-1-1 Fact Sheets

11" x 8 1/2"

A more in-depth description of 2-1-1's scope of services.

*Free for professional use as an introduction to 2-1-1 or as a presentation aide.



Fill Your Toolbox



This guide was made possible through funding provided by the United Way of the Brazos Valley Youth Leadership Cabinet.

Fill Your Toolbox

5 1/2" x 4 1/2"

A spiral-bound, compact resource guide to low-cost living in the Brazos Valley.

*May be purchased for \$2, or for a negotiated bulk rate. For professional and public use.

For more information on how to order 2-1-1 materials or to request an informational presentation, please contact:

Paula DeLaCruz, Community Information & Referral Specialist

2-1-1 Texas/United Way of the Brazos Valley

pdelacruz@uwbv.org

